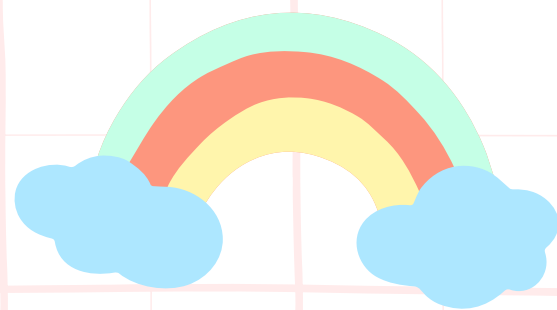




Welcome to



Pre-K & Kindergarten Parent Orientation!

WEST MEMORIAL ELEMENTARY SPRING 2025



LEADERSHIP TEAM



NOTES



Ms. Marron (Principal), Ms. Abousteit (AP), Ms. Paek (AP), Ms. Tharp (AP),
Ms. Nguyen (Principal's Secretary), Ms. Gentry (Ins. Coordinator),
Ms. Beesley (Ins. Coach), Ms. Thomas (Counselor), Ms. Lopez (Counselor),
& Ms. Kelly (Social Worker)



PRE-K TEAM

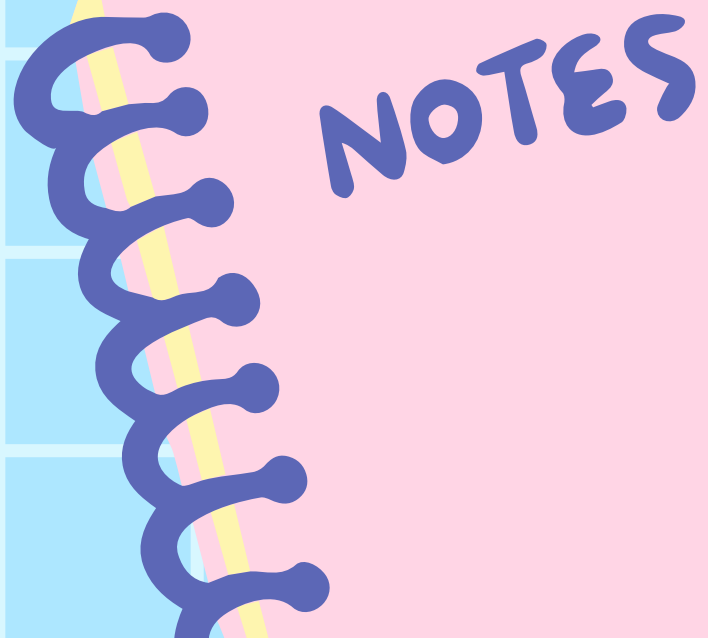
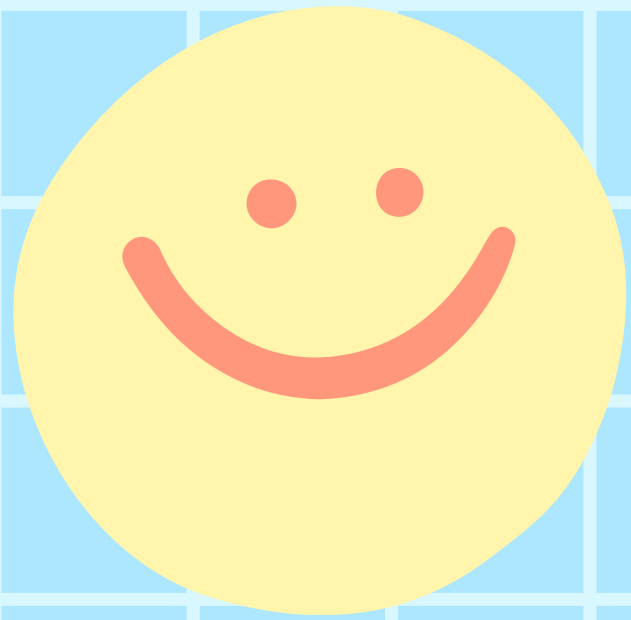


NOTES



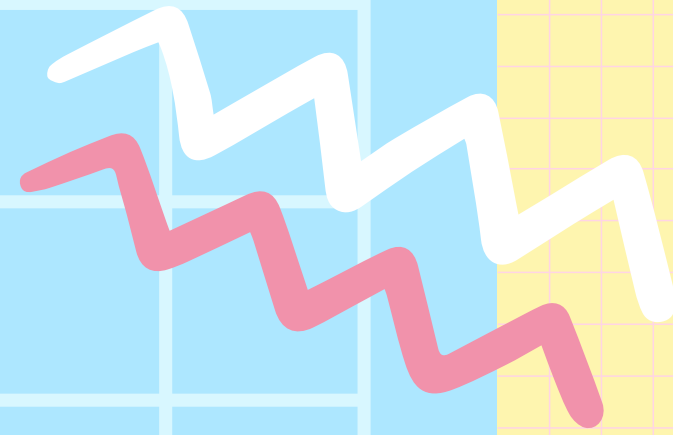
Left to Right:
Ms. DeLeon (bilingual), Ms. Anderson, Ms. Benitez (aide),
Ms. M. Bracho (bilingual), Ms. Manrique (aide), & Ms. E. Bracho (aide)

KINDERGARTEN TEAM



Ms. Brown, Ms. Bultron, Ms. Ness, Ms. LaFleur, Ms. Walker, Ms. Sheffield, Ms. Salinas (bilingual), & Ms. Castellanos (bilingual)

PTA BOARD



NOTES



Left to Right:

Ms. Boetang (treasurer), Ms. Butler (hospitality), Ms. Leaverton (fundraising), Ms. Ybarra (programs), Ms. Nguyen (VIPS), Ms. Cole (president), Ms. Eisenstaedt (secretary), Ms. Lin (parliamentarian)

WHAT HAS THE PTA PROVIDED THIS YEAR

FUNDS RAISED

- Restaurant Spirit Nights - \$607
- Big Kahuna Fall Fundraiser - \$15,538
- Pancakes with Santa and Holiday Shop - \$1,960
- Tshirt and supply sales - \$2,800
- Donation from Mr. Reliable Heating and Air - \$6,870
- Adventure Dash - \$10,556

Total: \$38,413

CAMPUS SUPPORT \$14,000

- Window wrap for the atrium doors per WME request. This will help WME achieve increased security standards for students on our campus.
- Supplies and equipment for PE, Art, and Music.

FAMILY AND COMMUNITY EVENTS \$1,200

- Tears and Cheers
- Mother Son Game Night
- Pancakes with Santa
- Mother Daughter Tea
- Father Daughter Dance
- Father Son Game Night

STAFF SUPPORT \$3,500

- Monthly Treat a Teacher
- Back to School Meal for Teachers
- Room service snacks x2
- Birthday Treats for Teachers
- STAAR week snacks
- May Teacher Treats

STUDENT ACTIVITIES \$15,830

- Patrol Stories
- New House shirts coordinated and designed (cost for shirts donated by Mr. Reliable Heating and Air)
- Books for the book vending machine
- Kinder Rodeo, First Grade Carnival
- Upcoming grade specific support
- 5th Grade Shirts and Party in May

ADMINISTRATIVE \$3,183

- | | |
|-----------|------------------|
| • Storage | • Insurance |
| • Fees | • Flyers |
| • Dues | • Bulletin Board |
| • Taxes | |

TOP 5 LIST FROM PTA



- Get Connected to WME PTA:
 - Facebook @ West Memorial Elementary PTA
 - Instagram @katywmepta
 - New website coming soon
- Order School Supplies Through PTA
 - Orders open now until May 20th
 - Each supply pack includes a PTA membership
- Join PTA!
 - <https://www.joinpta.org/>
- Spirit Wear
 - Order in the beginning of the year via new website
- Get Involved and Volunteer!
 - Dads can get involved with WATCH D.O.G.S.
 - Any other questions? Please email president@wmepta.org

We ♥ our
Volunteers





FOUR HOUSES ONE WILDCAT FAMILY





FOUR HOUSES ONE WILDCAT FAMILY



4TH GRADE LIEUTENANTS



WME HOUSE SORTING DAY



5TH GRADE COUNCIL



FOUR HOUSES ONE WILDCAT FAMILY

HOUSE OF AMISTAD

Crossed Arms (The Keys)

The crossed arms symbolize the keys to unlock the gateway to friendship.

The Castle

Anchoring the center of the shield, the castle represents our foundation of power and protection through comradery.

Friendship

The name "Amistad" is Spanish for "friendship." We are the House of Friendship!



The Peacock

The peacock is our symbolic animal — a creature representing the heart's desire to love and protect a friend. The peacock has a preserving spirit that never quits and never dies, just like us!

The Knight

The Knight is the symbol of the protector. While the peacock sits quietly on top, the knight shows that a fierceness lies within.

Red

Amistad is the red house, because red is the color that embodies the kindness of heart.



FOUR HOUSES ONE WILDCAT FAMILY

HOUSE OF ISIBINDI

The Mute Swan

At the top of our crest is the Mute Swan, its beauty speaking volumes and its discernment a reflection of the storied tradition of Zulu leadership — astute, compelling and unwavering.

The Ebony Tree

The African ebony tree pays homage to the awe-inspiring beauty of the continent of our heritage.

Courage

“Isibindi” means “courage” in the language of Zulu.



The Zulu Axe

The ancient Zulu axe, hewn in the time of Shaka Zulu, pairs shrewd thought with the power to stand firm in the name of protecting land, people, and spirit.

The Lion

At the center of the crest is the lion. Living in a pride, dedicated to family, he is revered throughout the world for his enviable strength and courage.

Green

The color green reminds us of the rich and abundant resources of Africa.



FOUR HOUSES ONE WILDCAT FAMILY

HOUSE OF REVEUR



The Knight

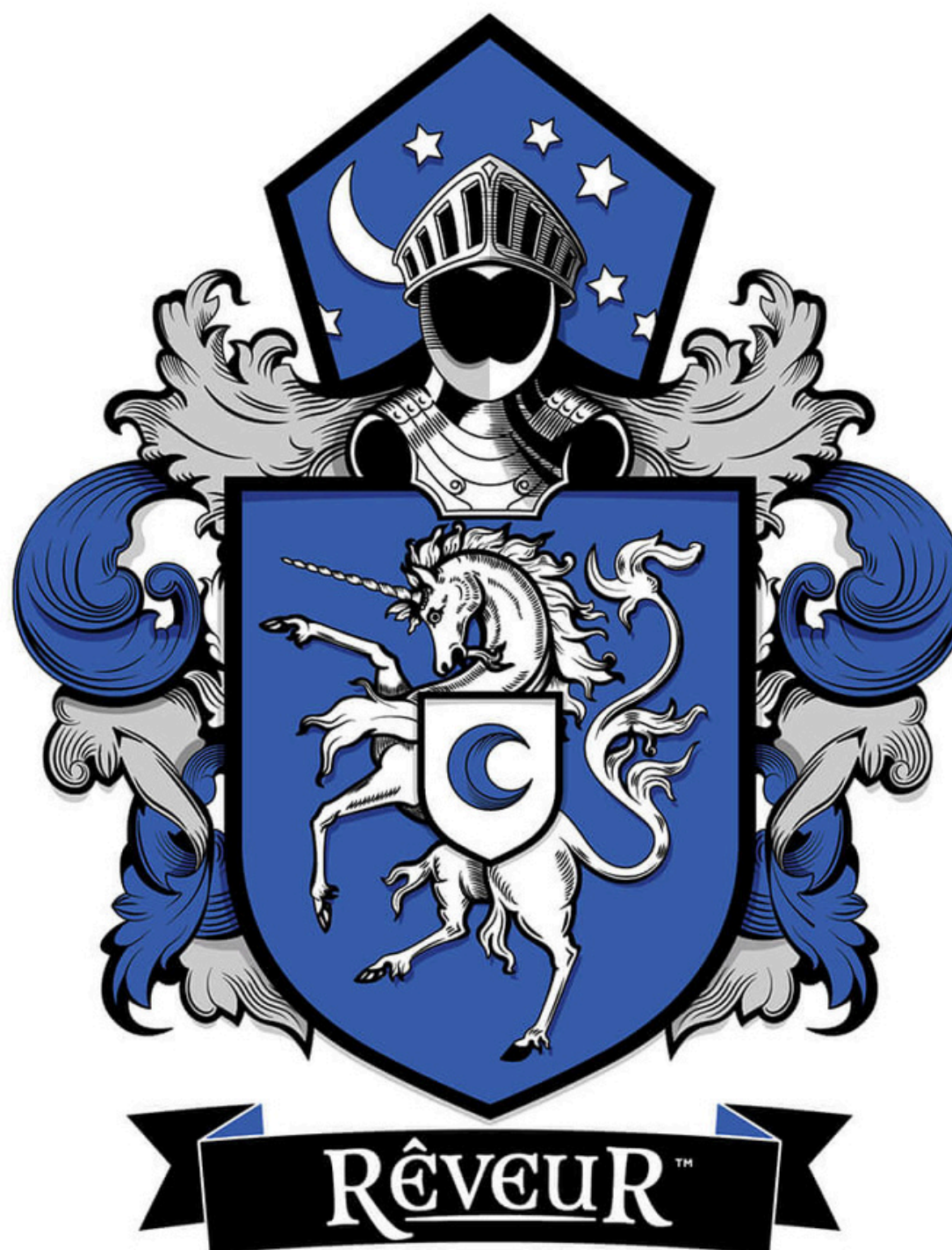
The open-visored helmet facing forward is typically reserved for the highest ranks of nobility. The knight is facing forward to symbolize having dreams and letting nothing stand in your way!

The Unicorn

A symbol of freedom, healing and beauty, the unicorn's powers are both magical and mystical. Known for its freedom and wild abandon, the unicorn is extremely difficult to tame.

Dreamer

Our name, "rêveur," comes from the French for "dreamer or idealist."



Crescent Moon

The crescent moon symbolizes new beginnings and the making of dreams into reality.

The moon also represents our symbolic animal, the wolf — because when the moon comes out, the wolves come out!

Blue

The color blue instills confidence and passion while releasing all fears and anxiety.



FOUR HOUSES ONE WILDCAT FAMILY

HOUSE OF ALTRUISMO

Heart

The heart sits at the top of the crest because the heart is where kindness, generosity, and purity are born.

Diamond + Shield

The diamond on the shield, in the center of the crest, represents the importance of protecting others with unity and wisdom.

Giver

“Altruismo” is Portuguese for “altruism,” or “the givers” — and that is what we are known for being!



Griffin

With the head of an eagle and the courage of a lion, the griffin is one of the most powerful of all animals known for both strength and grace, fierceness and nurturing.

Black

The color black represents prestige and an elite quality, just like our kids. We are a House filled with talent, and we like to win.

Black is also the one color that contains all other colors — representing our goal of empowering all others.

Registrars



Paloma Pineyro

Last Names A-?

P: 281-237-6605

palomapineyrovazquez@katyisd.org

Rosi Barraza

Last Names ?-Z

P: 281-237-6643

rosijbarraza@katyisd.org



REGISTRATION INFORMATION

- Pre-Registration for 2025-2026
 - Applies to students currently not enrolled in KISD
 - Opens March 31st-June 20th for Pre-K
 - Opens March 31st-June 27th for grades K-12
 - All required documents will need to be uploaded before submitting the registration
- Summer Registration Dates
 - Opens July 25th
- Annual Student Enrollment
 - Applies to currently enrolled KISD students
 - Opens Week of July 28th
- 1st Day of School (August 13th)

REGISTRATION INFORMATION CONTINUED...



*click
here!*

- To qualify for pre-kindergarten, the child must reside in Katy ISD and be **four years old** on or before September 1st of the current school year.
- If home campus is full, eligible students will be transferred to another campus outside attendance zone.
- You must be eligible for Pre-K and meet at least one of the following possible criteria:
 - English Language Learner
 - Eligible for Free & Reduced Lunch
 - Homeless
 - Child of Active Duty Member of Military
 - Child of Military (killed/injured during active duty)
 - Foster Care
 - Child of first responder seriously injured/killed in line of duty

REGISTRATION INFORMATION CONTINUED...



- To qualify for kindergarten, the child must reside in Katy ISD and be five years old on or before September 1st of the current school year.
- Click the image below to go to our PowerSchool Online Registration website to begin the registration process.

*click
here!*



REGISTRATION INFORMATION CONTINUED...

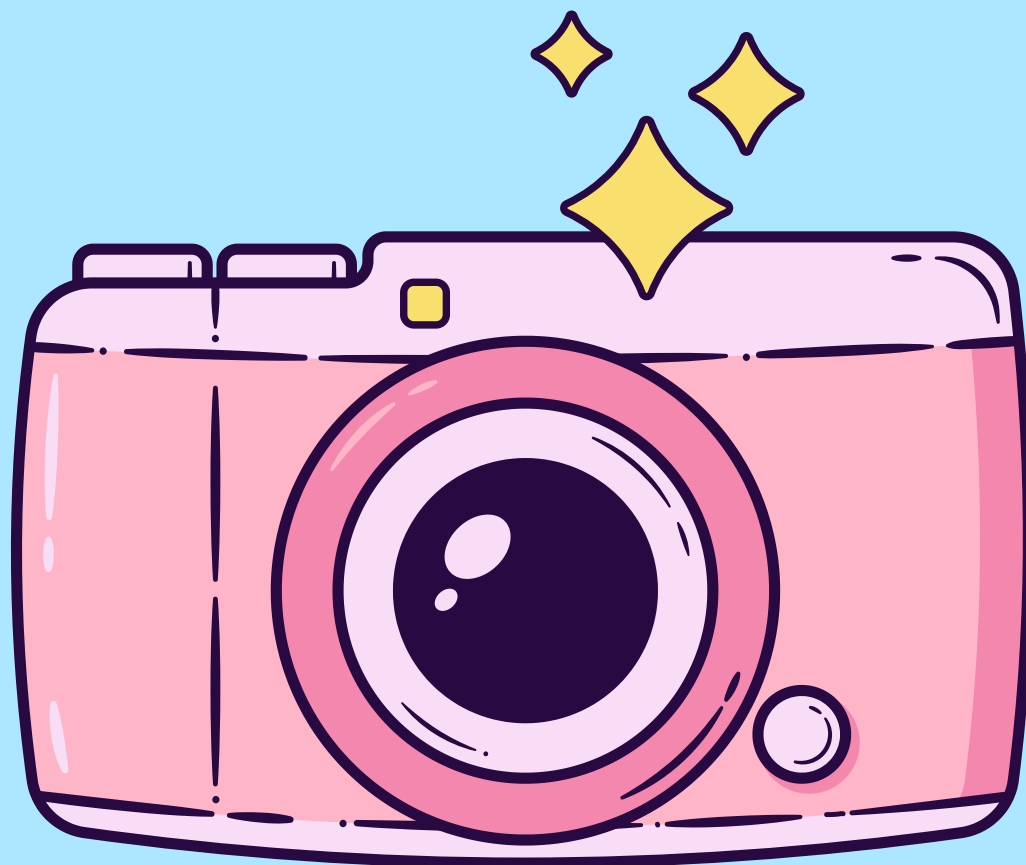


REQUIRED Documents:

- Birth Certificate/Passport (original)
- Social Security card (optional)
- Immunization Records (must have doctor's signature)
- Parent's Driver's License/Passport
- Proof of Residence
 - *HUD closing statement/Lease agreement
(MUST have signatures from buyer/seller)
 - *Recent Utility Bill
(water, gas, or electric within the past 30 days)
 - *Sales Contract & Loan Approval Letter
 - **If a lease agreement or purchasing paperwork is provided
at the time of registration, a utility bill must be provided
within 30 days of occupancy



STUDENT PRIVACY CODES



- Please be aware that your child's privacy code will default to "N".
- You **MUST** change it to "Y" or "O" if you want your student's picture or name to be included in various publications.

3. What are the privacy code options from which a parent/guardian can choose?

There are three privacy codes from which a parent/guardian may choose: Y - Yes, O - Other, and N - No. Please refer to the chart for the implications of each code.

Privacy Code Selections and Implications	"Y" Yes	"O" Other	"N" No
School-Confined Publications	YES	YES	NO
Programs for Performances	YES	YES	NO
Yearbook	YES	YES	NO
Professional School Group or Class Photos*	YES	YES	NO
Officially-designated vendors for school-related purposes	YES	YES	NO
The Public: Anyone making a public information request	YES	NO	NO
News Releases	YES	NO	NO
School Directories	YES	NO	NO
School Publications (Available to Public)	YES	NO	NO
District/Campus Webpage	YES	NO	NO
Photographs	YES	NO	NO
Social Media Platforms	YES	NO	NO

Clinic



Crystal Speights

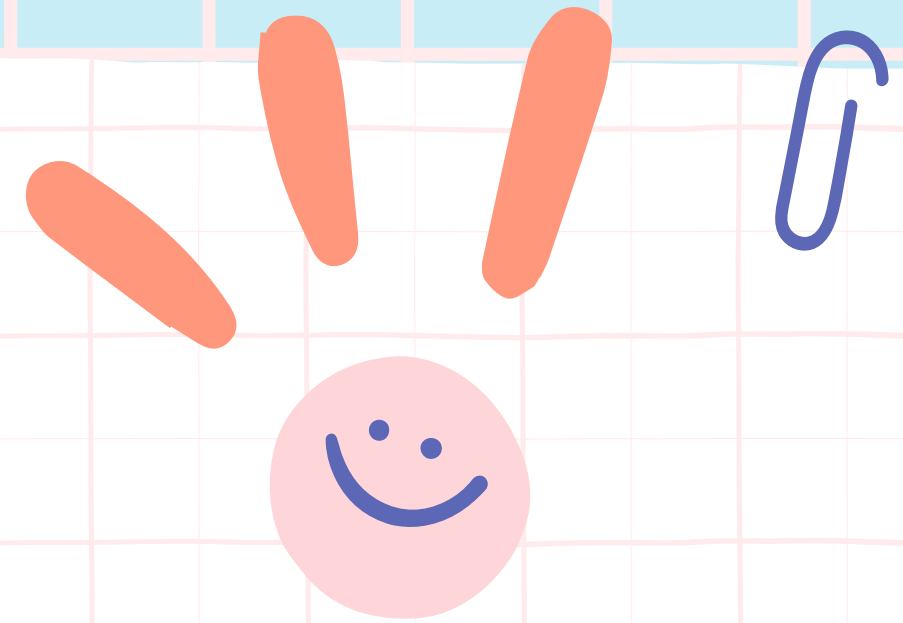
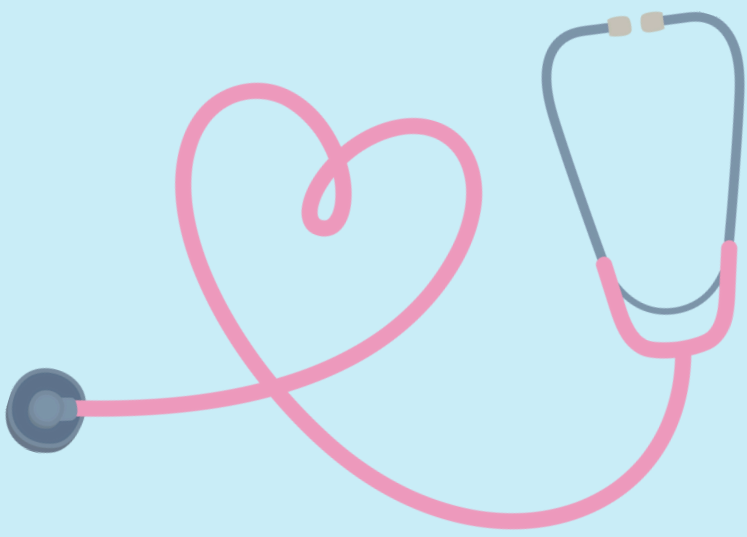
Campus Nurse

P: 281-237-9765

crystalgspeights@katyisd.org

Kathy Stevenson

Nurse's Aide





IMMUNIZATIONS

- Texas Department of Health requires all school age children to be up to date on immunizations. Children are excluded from school until the required immunizations are obtained and a copy is given to the school nurse. Immunization requirements can be found at: www.katyisd.org



<- Click the image to go to the
2025-2026 Vaccine Requirements Form

- Contact school nurse with questions.



24-HOUR RULE

- If your child has a FEVER (100° or above), VOMITING, or DIARRHEA, Katy ISD guidelines state that he or she must stay home for 24 hours.
- To give your child time to recuperate and to protect classmates and teachers, the child must be symptom free without the aid of medications for a 24-hour day before returning to school.





MEDICATIONS

- Texas Department of Health requires all school age children to be up Children may not carry medicine with them at school - not even cough drops. If your child needs medicine at school, send a note completed by a parent or the physician plus the medicine in its original container. You or your child can drop it off in the clinic before going to class.
- Three times a day medications are not given at school. All doses can be given at home. This was determined by Pediatricians in the area and is a District Policy.
- The official form can be found at the Katy ISD website.



<- Click the image to go to the
Medication Administration Form



CLINIC



- Vision and hearing screenings will be done in the fall.
- During online registration, there will be a place for you to provide phone numbers where you can be reached as well as local emergency contacts who can be reached if you are unavailable.
 - It is vital that the phone numbers are accurate.
 - Please give the phone numbers an order as to who should be called first, second, etc.
 - Please fill out the Health Inventory. If your child has a condition you need to speak to the nurse about, please call or come by at the beginning of the school year.

Counselors & Social Worker

Jeannette Lopez (counselor)

Grades: PK/K, 2nd, & 4th

P: 281-237-6044

jeannettealopez@katyisd.org



Keisha Thomas (counselor)

Grades: 1st, 3rd, & 5th

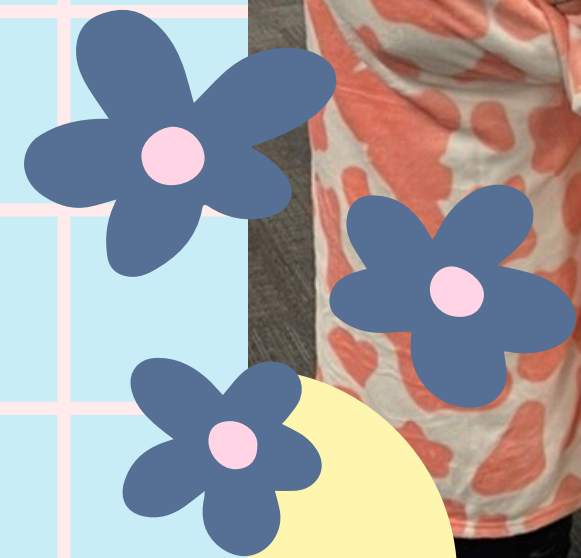
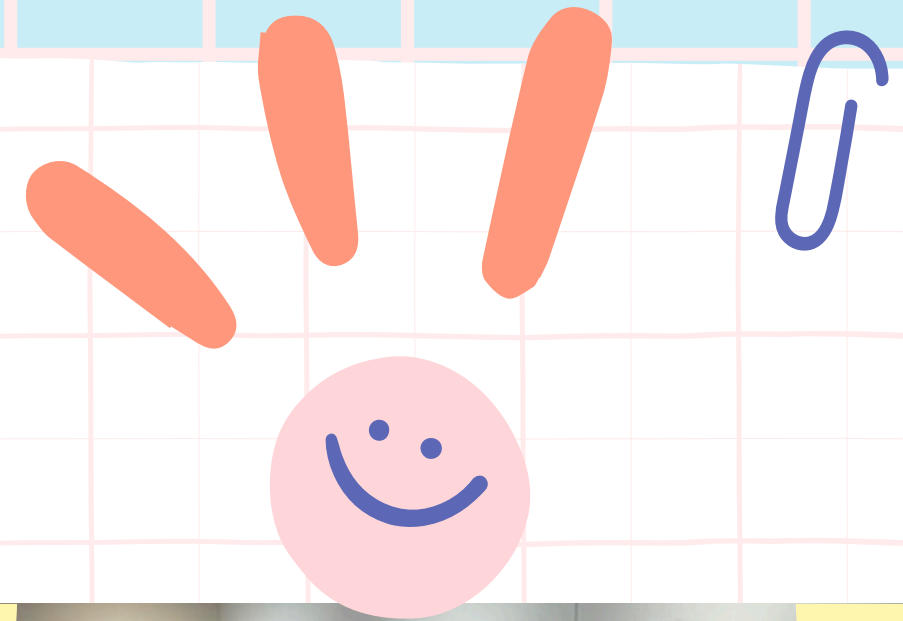
P: 281-237-6044

lakeishadthomas@katyisd.org

Angie Kelly (social worker)

P: 281-237-4391

angelinatKelly@katyisd.org





MENTAL HEALTH PROFESSIONALS

- Counselor's Role and Social Worker's Role
- Counseling Services
- Social Readiness Skills
 - Follows one and two step directions
 - Communicates needs
 - Knows how to share & Take turns
 - Plays and gets along well with others
 - Is respectful to adults and peers
 - Eats independently
 - Uses the restroom independently
 - Independently puts on clothes and footwear



A TYPICAL DAY IN KINDERGARTEN



Arrival/Dismissal

Reader's Workshop

Guided Math

Lunch



Community Circle

Writer's Workshop

Science

Recess



Calendar

Structured Literacy

Social Studies

Specials

SPECIALS

4-Day Daily Rotation

50-minutes each day

One of the most popular times of the day!



PE



Art



Music

Library

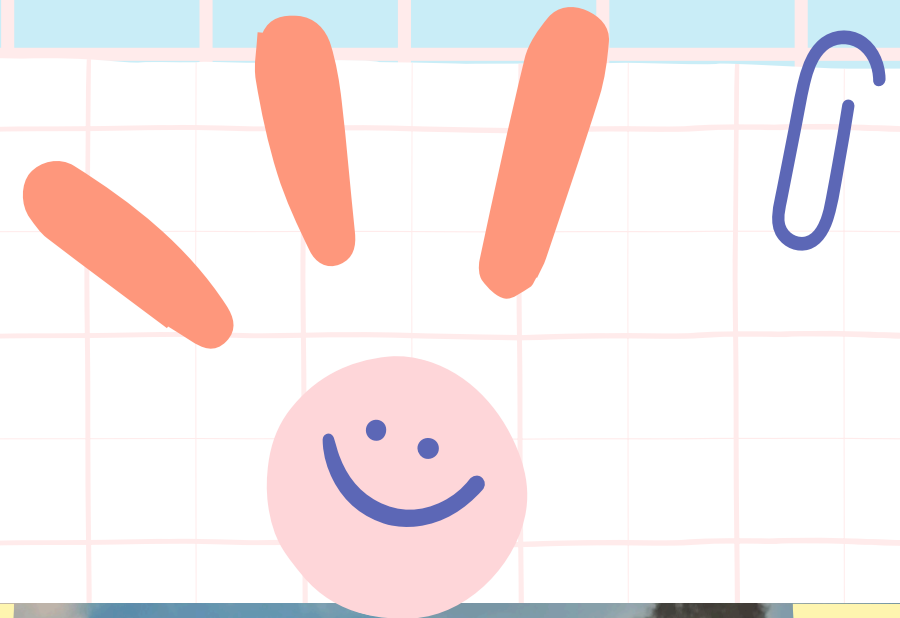


Kristen Schmid
Librarian

P: 281-237-6628
kristenschmid@katyisd.org

Natalie Alvarado
Library Aide

P: 281-237-6629
natalievalvarado@katyisd.org



LIBRARY

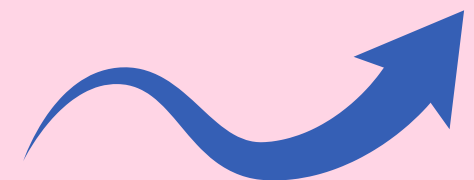
- Library lessons and check out - once every 2 weeks
- Teachers can send students 2 students at a time for library books after the first 9 weeks of school.
- Library books stay at school.
- West Memorial Library Facebook page (see QR code)





SCHOOL IDS AND BACKPACK TAGS

- All students are required to wear a school ID during the instructional day.
- All students have a RFID Tag on their backpacks.
- Katy ISD provides a school ID and backpack tag (RFID) at the beginning of each school year.
- If a school ID or backpack tag is lost, a new ID must be ordered via the **Lost ID Form** (see QR Code). You will receive an email with payment information once the form is processed.



SCAN ME 

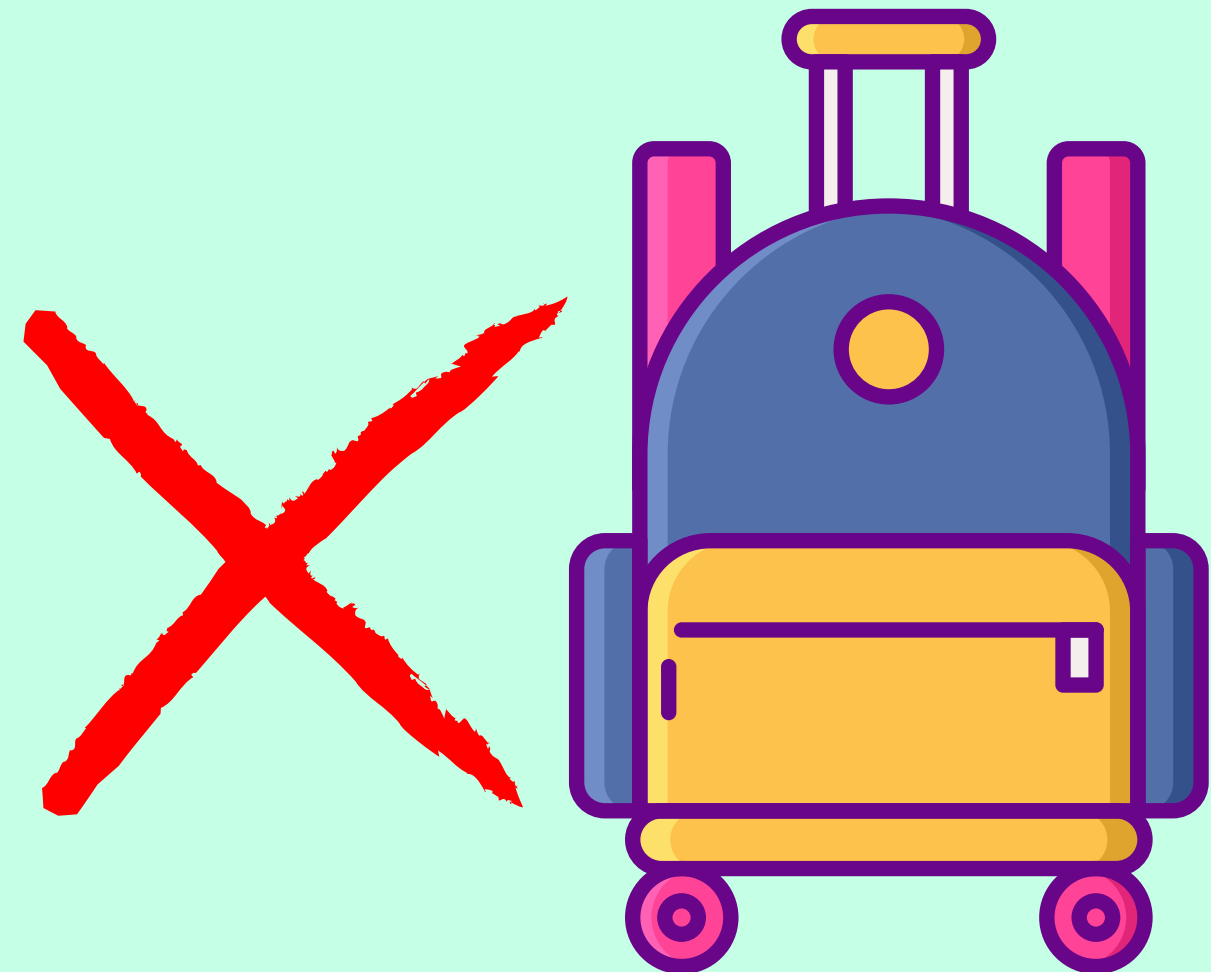
LUNCH



- 30-minutes a day
- CEP (Community Eligibility Provision) Campus
- All students receive FREE breakfast & lunch
- ID badges are required to go through the cafe line
- Additional a-la-carte purchases require money in student's GENERAL account (Parents can add money via Pay-N-Go)
- NO lunch visitors for the first 2 weeks of school as students transition into a new routine and environment.
- Lunch Visitors
 - Parents & Grandparents (must be listed on Lunch Visitors Form)
 - Check-in through Front Office with current government issued ID

BACKPACKS

- Large enough to hold folders and a library book
- Easy to open and close
- No rolling backpacks PLEASE!



PUT NAMES ON EVERYTHING

- Backpacks
- Lunch boxes
- Snacks
- Coats
- Water bottles (easy open/close)



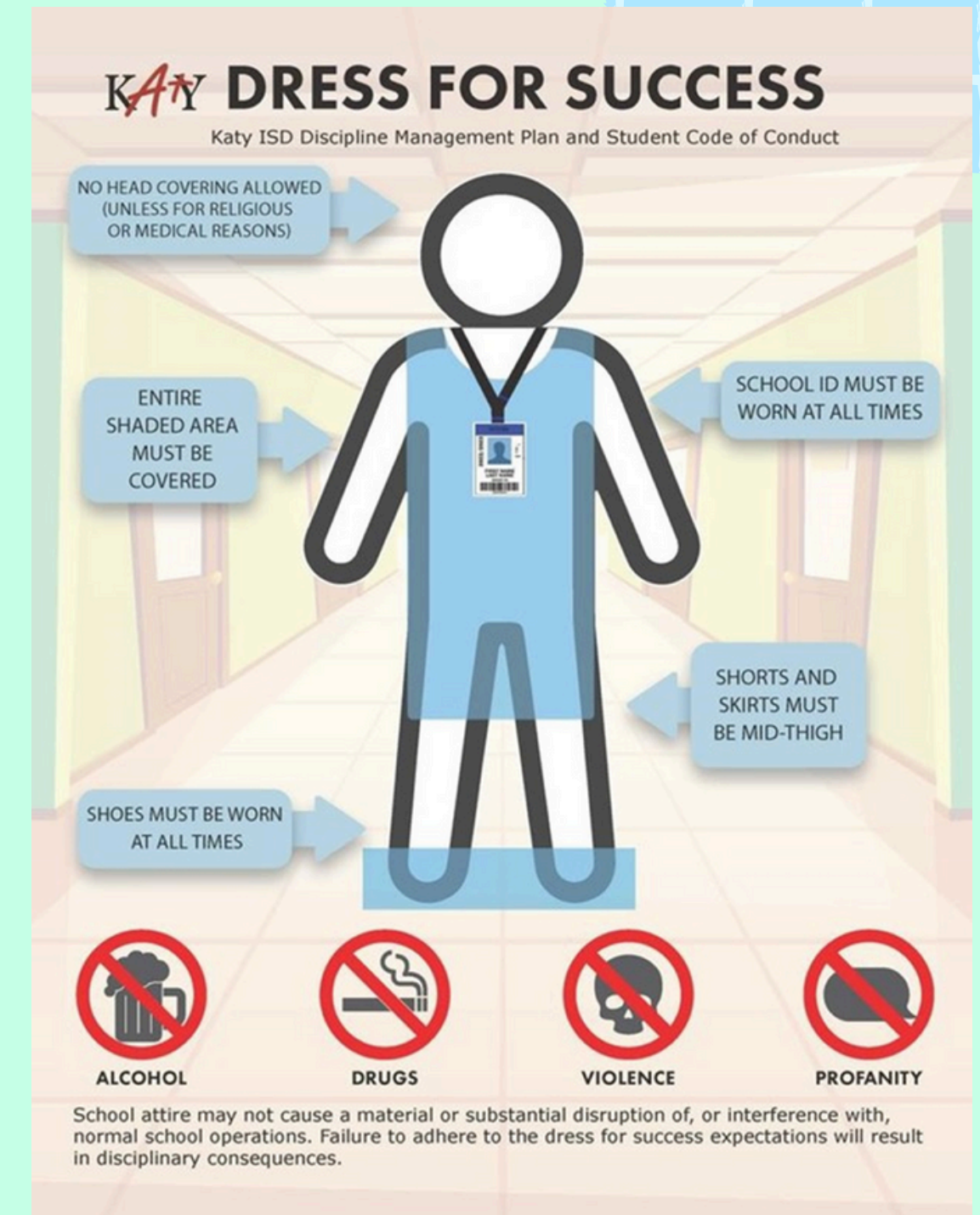
SCHOOL SUPPLIES

- Follow recommended school supply list to purchase supplies (highly recommended to purchase PTA school supplies)
- Please DO NOT label school supplies with your child's name
- Supplies will be used as community supplies
- Pre-ordered supplies will be delivered to classrooms before school starts



DRESSING FOR SCHOOL

- District Policy is listed on the KISD website
- Elastic pants/shorts are best at the beginning of the year
...remember potty time 😊
- Flip flops are strongly discouraged
- Ziploc baggie of extra clothes, including underwear and socks, for those “just in case” moments (kept in backpack; changed out seasonally)





TRANSPORTATION



- How will your child go home on the first day and rest of the year?
 - **Bus** (eligible riders in grades K-5)
 - Must have parent/adult at bus stop for kindergartner drop-off
 - **Car** (Parent Pick-Up)
 - Must have Family Number Tag at pick-up
 - **Walker/Biker** (Front/Back)
 - Must have Family Number Tag at pick-up
 - **Daycare**
- Try to keep the mode of transportation consistent day to day.
- Please decide your child's method of dismissal transportation home prior to Meet the Teacher.



PARENT TO DOS:

- School Hours (currently) 8:10 a.m.– 3:20 p.m.
- Students can start entering the building at 7:45 a.m.
- Tardy bell rings at 8:10 a.m.
- You can bring your child to school and walk him/her to class on the first day 😊
- Receive forms, review, complete, and return as soon as possible
- Confirm method of transportation going home
- Send your child with a snack and water bottle
- Quickly and cheerfully exit
- Join us for “Tears & Cheers” in the gym! 😊



MARK YOUR CALENDARS

- **Meet the Teacher:** Monday, August 11th
- **First Day of School:** Wednesday, August 13th
- **Orientation Night:** TBD

kindergarten



AUGUST 2025

S	M	T	W	T	F	S
27	28	29	30	31	1	2
3	4	5	6	7	8	9
10	11	12	13	14	15	16
17	18	19	20	21	22	23
24	25	26	27	28	29	30
31	1	2	3	4	5	6



QUESTIONS?

Thank you for coming!

